

IM330, IM350 - Loading Rates

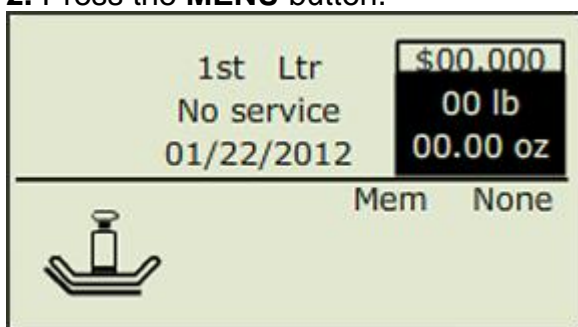
The following conditions must be met before loading rates:

- The customer must have a rate protection contract.
- The machine must be declared.
- The new rates must be loaded into the mailing system on or after January 12, 2012.

Loading Rates

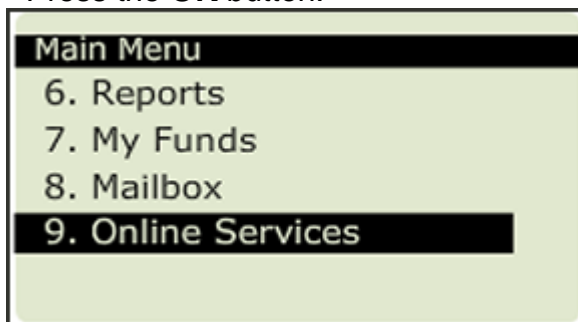
1. Disconnect the power cord plug from the wall outlet, wait 10 seconds, then re-insert the power cord plug into the wall outlet. The Homescreen will be displayed.

2. Press the **MENU** button.



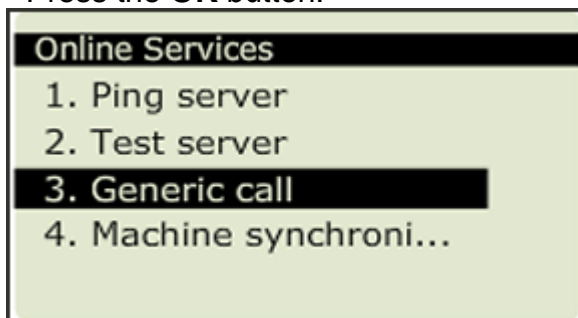
3. Press the down arrow button until **Online Services** is highlighted.

- Press the **OK** button.



4. Press the down arrow button until **Generic Call** is highlighted.

- Press the **OK** button.



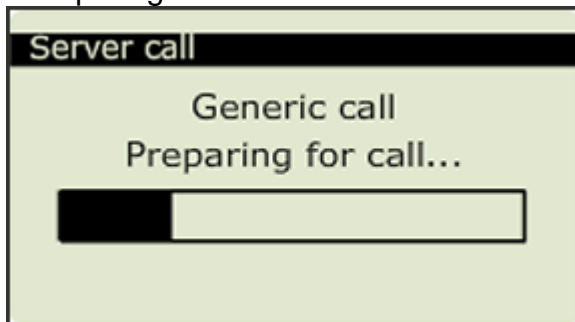
Limitations of this Document

The information presented herein is subject to change. Neopost USA Inc. ASSUMES NO LIABILITY WHATSOEVER FOR ANY LOSSES OR DAMAGES RESULTING IN THE USE OF THIS INFORMATION.

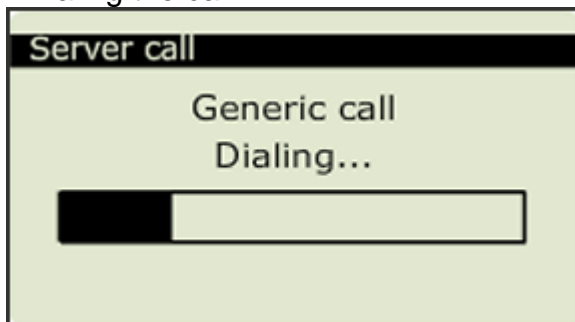
HASLER

5. The Generic Call will display the following screens:

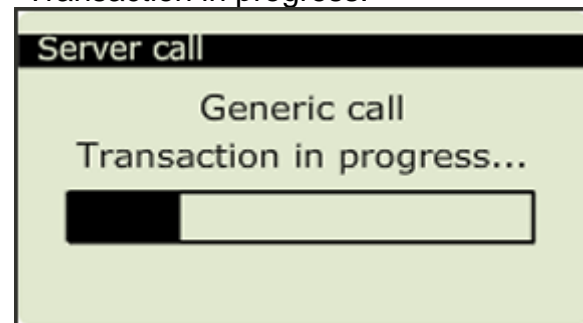
- Preparing for the call.



- Dialing the call.



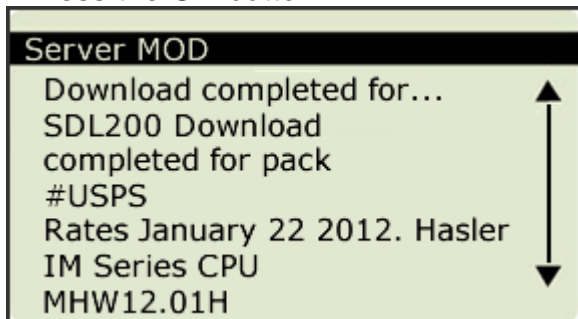
- Transaction in progress.



DO NOT INTERRUPT THIS PROCESS.

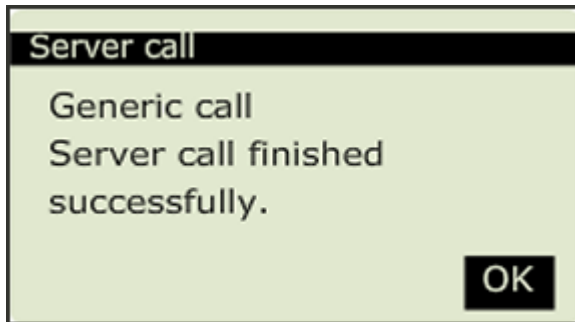
6. After the new rate is loaded successfully, the following screen will be displayed.

- Press the **OK** button.



HASLER

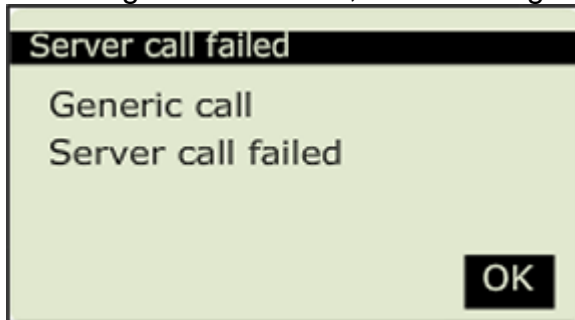
7. The Generic Call finished successfully.
- Press the **OK** button.



8. Press the **BACK** button several times until the Homescreen is displayed.
The new rates will become active on January 22nd, 2012.

If The Generic Call Fails:

1. If the generic call fails, the following screen will be displayed.



2. Follow steps 1-8 again.

Note: If the mailing machine has not connected to the online server for many months, it may be necessary to repeat steps 1-8 up to 6 times to allow the machine to upload statistics per USPS requirements. If 6 attempts have been made and the generic call continues to fail, please contact your local service provider for assistance.